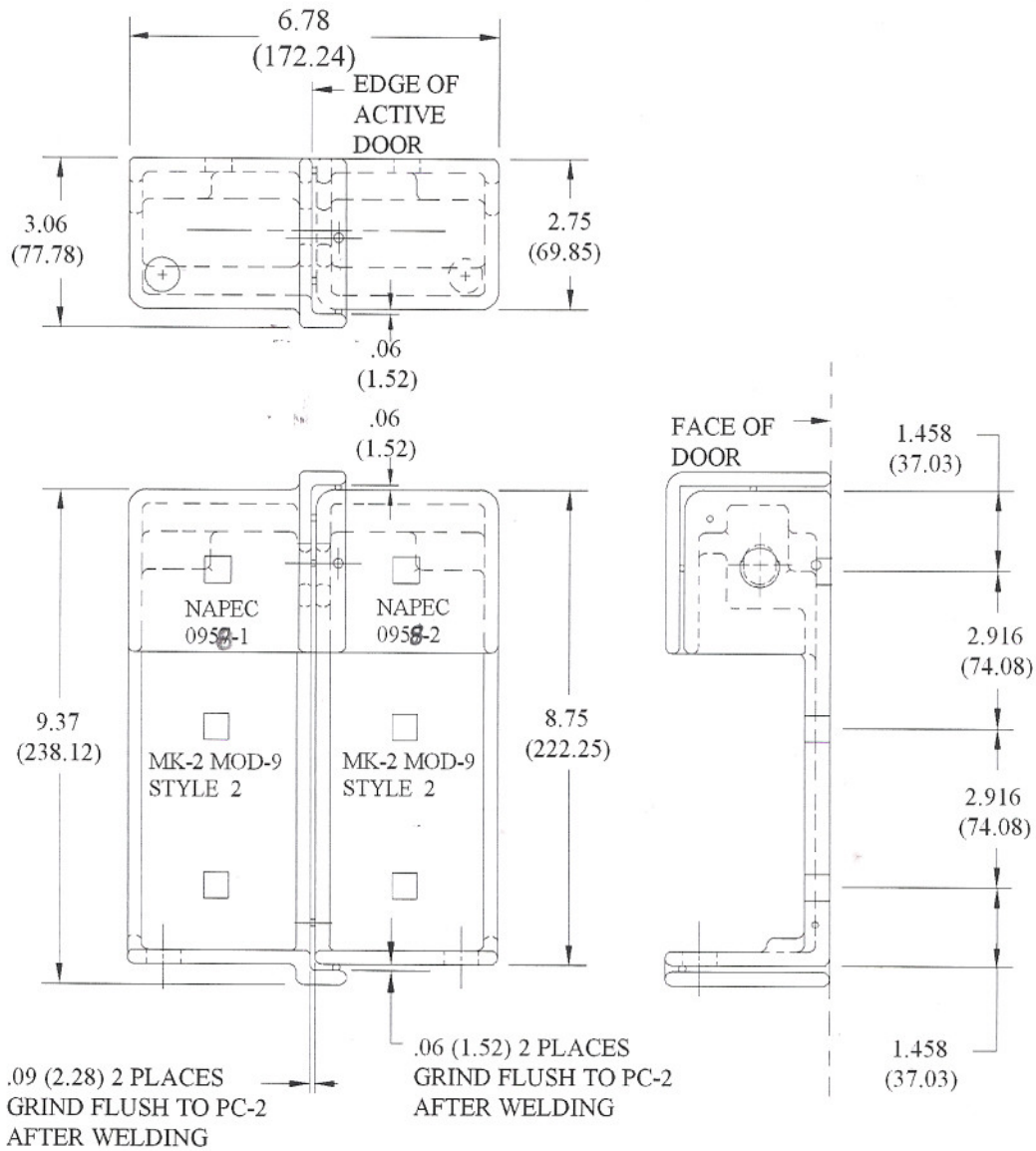


NOTES:

1. On back side of each half, machine or cast 3 holes to accept 0.375-inch (9.52 mm) square neck carriage bolts. Holes to be centered horizontally and vertically spaced 1.458-inch (37.03 mm) from top and bottom outside surface. Bolt hole centers 2.916 inches (74.08 mm) apart.

0957

FIGURE 1. Style 1, MK 2 MOD 9.



0958

FIGURE 2. Style 2, MK 2 MOD 9.